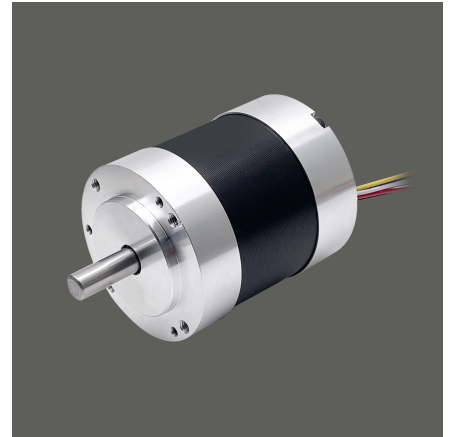
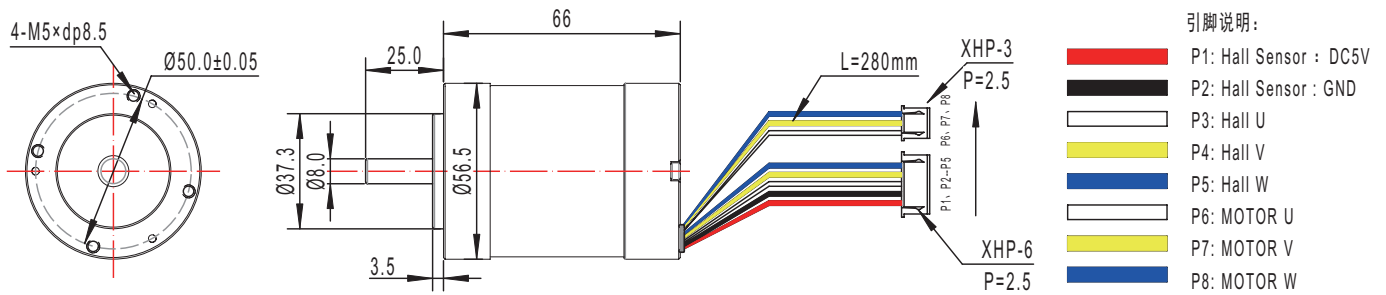


TEC5665

56mm brushless motor



接线方式 B		Connection Mode B	
正反转功能		Clockwise Rotation/Counter Clockwise Rotation	
信号输出功能		FG Signal	
脉宽调速功能		PWM Control	
锁定保护		Locked Rotor Protection	
最大功率	50W(外置驱动)	Power	50W(External Drive)
	/		/
电机寿命	约5000H(滚珠轴承)	Life Expectancy	~5000H(Ball Bearing)
	/		/



Weight:670g(Approx)

Unit(mm)

单电机技术参数 Motor Technical Data

电机型号 Motor model	额定电压 Rated voltage	无负荷 No-load		额定 Rated				堵转 Stall	
		转速 Speed	电流 Current	转速 Speed	力矩 Torque	电流 Current	功率 Power	力矩 Torque	电流 Current
	VDC	r/min	mA	r/min	g.cm	mA	W	g.cm	A
TEC5665-1240	12.0	3900	400	3471	858	3200	30.54	7800	25.8
TEC5665-2440	24.0	3900	240	3315	1193.9	2060	40.59	7952	11.7

