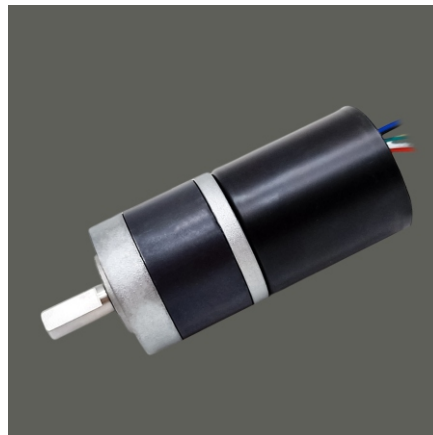
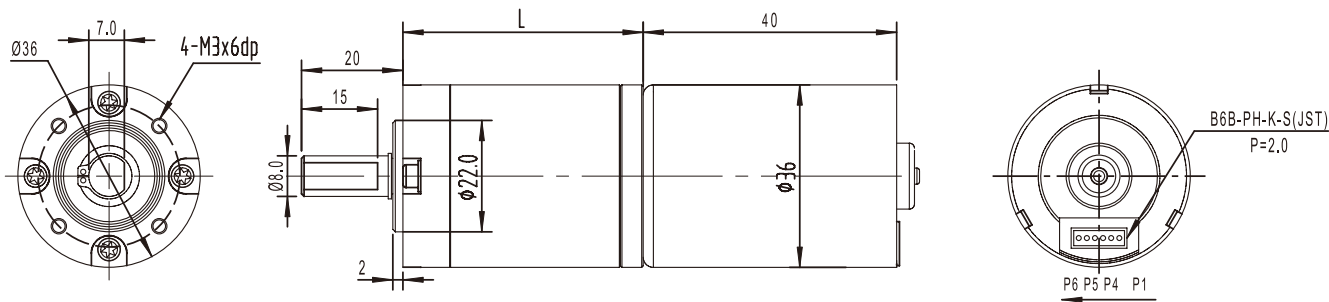


# GMP36-TEC3640

36mm Planetary gearbox plus 36mm brushless motor



模数 Module	0.5			
额定负载 Rated torque (kg.cm)	30.0kg.cm max			
瞬间允许力矩 Max momentary tolerance torque (kg.cm)	60.0kg.cm max			
减速比 Reduction ratio	1/4	1/14 1/19 1/27	1/51、1/71 1/100、1/139	1/189、1/264 1/369、1/516 1/720
齿轮箱减速级数 Number of gear stages	1	2	3	4
减速箱长度 L (mm)	26	33.5	40.5	47.5



Weight: 400g(Approx)

Unit(mm)

## 减速电机技术参数 Gear Motor Technical Data

电压 Voltage	减速比 Reduction ratio	性能 Performance																																																										
		空载转速 No-load speed (rpm)	负载转速 Rated speed (rpm)	负载力矩 Rated torque (kg.cm)	空载转速 No-load speed (rpm)	负载转速 Rated speed (rpm)	负载力矩 Rated torque (kg.cm)	空载转速 No-load speed (rpm)	负载转速 Rated speed (rpm)	负载力矩 Rated torque (kg.cm)	空载转速 No-load speed (rpm)	负载转速 Rated speed (rpm)	负载力矩 Rated torque (kg.cm)																																															
12.0V	4	1625	1400	0.4	1000	850	0.38	19	294	1.53	210	179	1.46	51	110	3.29	78	67	3.1	100	56	6.45	40	34	6.14	139	40	9	28	21	8.54	189	29	9.7	15	11	9.3	264	21	13.6	11	8	13	369	15	19	8	6	18	516	10	26	6	5	25	720	8	30	5	30
	19	342	294	1.53	210	179	1.46	51	110	3.29	78	67	3.1	100	56	6.45	40	34	6.14	139	40	9	28	21	8.54	189	29	9.7	15	11	9.3	264	21	13.6	11	8	18	516	10	26	6	5	25	720	8	30	5	30												
	51	127	110	3.29	78	67	3.1	100	56	6.45	40	34	6.14	139	40	9	28	21	8.54	189	29	9.7	15	11	9.3	264	21	13.6	11	8	18	516	10	26	6	5	25	720	8	30	5	30																		

## 单电机技术参数 Motor Technical Data

电机型号 Motor model	额定电压 Rated voltage VDC	无负荷 No-load		额定 Rated				堵转 Stall	
		转速 Speed r/min	电流 Current mA	转速 Speed r/min	力矩 Torque g.cm	电流 Current mA	功率 Power W	力矩 Torque g.cm	电流 Current A
TEC3640-1265	12.0	6500	150	5590	126	970	7.22	900	6
TEC3640-2440	24.0	4000	60	3400	120	350	4.18	800	2

