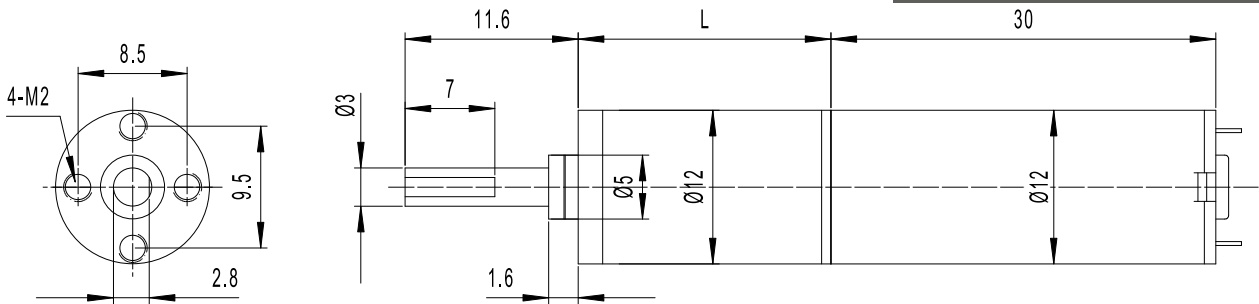


# GMP12T-TDC1230

12mm gearbox plus 1230 permanent magnet DC motor



模数 Module	0.2			
额定负载 Rated torque (kg.cm)	2kg.cm max			
瞬间允许力矩 Max momentary tolerance torque (kg.cm)	4kg.cm max			
减速比 Reduction ratio	1/4 1/6	1/16 1/24 1/36	1/64、1/96 1/144、1/216	1/256、1/384 1/576、1/864 1/1296
齿轮箱减速级数 Number of gear stages	1	2	3	4
减速箱长度 L (mm)	14.9	19.7	24.5	29.3



Weight: 40g(Approx)

Unit(mm)

## 减速电机技术参数 Gear Motor Technical Data

电压 Voltage	减速比 Reduction ratio	转速 Speed (rpm)								空载转速 No-load speed (rpm)	额定转矩 Rated torque (kg.cm)
		4	16	36	64	96	216	576	1296		
24V	空载转速 No-load speed (rpm)	6250	1562	694	390	260	116	43	19		
	负载转速 Rated speed (rpm)	4350	1088	483	272	181	80	30	13		
	负载力矩 Rated torque (kg.cm)	0.16	0.5	1.2	1.64	2	2	2	2		
12V	空载转速 No-load speed (rpm)	3750	938	416	234	156	69	26	12		
	负载转速 Rated speed (rpm)	2626	656	292	164	109	49	18	8		
	负载力矩 Rated torque (kg.cm)	0.11	0.36	0.8	1.15	1.72	2	2	2		

## 单电机技术参数 Motor Technical Data

电机型号 Motor model	额定电压 Rated voltage	无负荷 No-load		额定 Rated			堵转 Stall		
		转速 Speed	电流 Current	转速 Speed	力矩 Torque	电流 Current	功率 Power	力矩 Torque	电流 Current
	VDC	r/min	mA	r/min	g.cm	mA	W	g.cm	A
TDC1230-24250	24	25000	40	17400	50	820	9	160	2.6
TDC1230-12150	12	15000	30	10500	35	700	3.8	115	2.3

