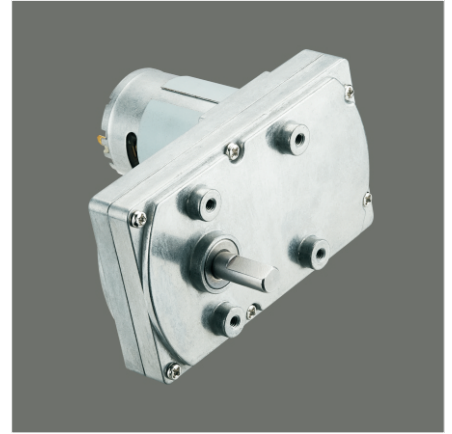
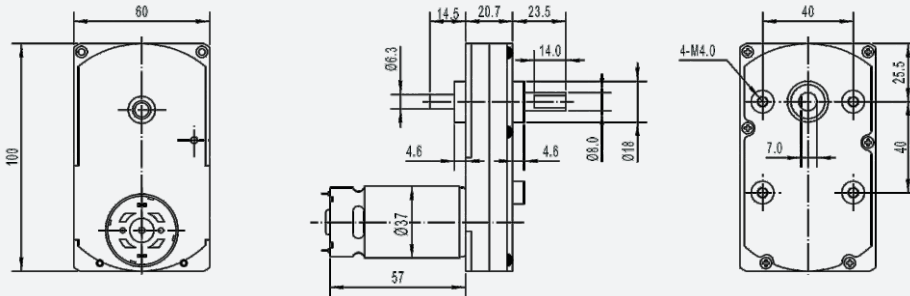


# GM100F-555PM 100 × 60mm gearbox plus 555 permanent magnet DC motor



模数 Module	0.6/0.8	
额定负载 Rated torque (kg.cm)	20.0 kg.cm max	
瞬间允许力矩 Max momentary tolerance torque (kg.cm)	40.0 kg.cm max	
减速比 Reduction ratio	1/60、1/110	1/200、1/365
齿轮箱减速级数 Number of gear stages	3	4
减速箱长度 Gearbox length L (mm)	20.7	



Weight: 560g(Approx)

Unit(mm)

## 减速电机技术参数 Gear Motor Technical Data

电压 Voltage	减速比 Reduction ratio	空载转速 No-load speed (rpm)				额定负载 Rated torque (kg.cm)			
		60	110	200	365	8	15	24	44
12.0V	空载转速 No-load speed (rpm)	80	45	25	14				
	负载转速 Rated speed (rpm)	70	40	22	12				
	负载力矩 Rated torque (kg.cm)	8	15	24	44				
	空载转速 No-load speed (rpm)	65	35	20	11				
24.0V	负载转速 Rated speed (rpm)	50	29	16	8				
	负载力矩 Rated torque (kg.cm)	8	15	24	44				
	空载转速 No-load speed (rpm)								

## 单电机技术参数 Motor Technical Data

电机型号 Motor model	额定电压 Rated voltage	无负荷 No-load		额定 Rated			堵转 Stall		
		转速 Speed	电流 Current	转速 Speed	力矩 Torque	电流 Current	力矩 Torque	电流 Current	
		r/min	mA	r/min	g.cm	mA	g.cm	A	
TRS-555PM-1250	12.0	5000	250	4300	200	1400	8.8	1430	8.5
TRS-555PM-2440	24.0	4000	150	3200	200	700	6.6	1000	3.5

