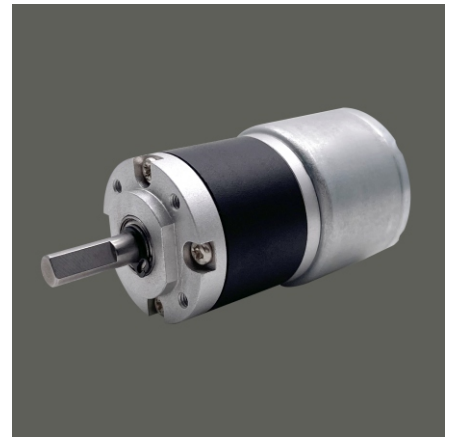
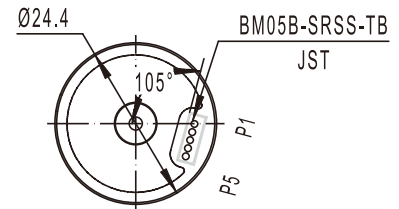
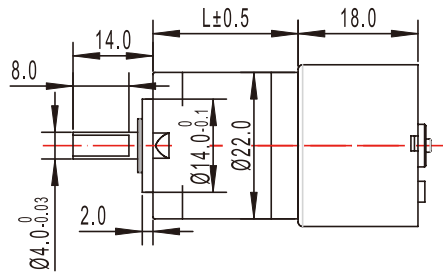
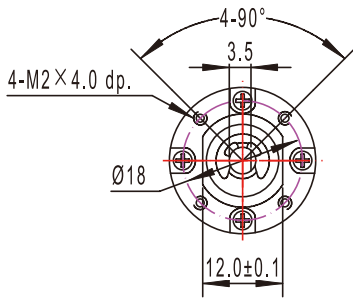


GMP22-TEC2418

22mm planetary gearbox plus 24mm brushless motor



模数 Module	0.3				
额定负载 Rated torque (kg.cm)	3.0 kg.cm max				
瞬间允许力矩 Max momentary tolerance torque (kg.cm)	6.0 kg.cm max				
减速比 Reduction ratio	1/4 1/4.75	1/16 1/19 1/22.6	1/64 1/76 1/90 1/107	1/172、1/224 1/256、1/304 1/361、1/428.7 1/509	1/1024
齿轮箱减速级数 Number of gear stages	1	2	3	4	5
减速箱长度 L (mm)	13.5	17	20.5	24	27.5



Weight: 90g(Approx)

Unit(mm)

减速电机技术参数 Gear Motor Technical Data

电压 Voltage	减速比 Reduction ratio	额定负载 Rated torque (kg.cm)								
		16	64	84	107	224	304	361	428.7	1014
12.0V	空载转速 No-load speed (rpm)	380	96	70	58	27	20	17	14	6
	负载转速 Rated speed (rpm)	320	80	60	47	22	16	14	13	5
	负载力矩 Rated torque (kg.cm)	0.2	0.7	1.0	1.2	1.8	2.6	3.0	3.0	3.0
24.0V	空载转速 No-load speed (rpm)	540	135	100	80	38	28	24	20	8
	负载转速 Rated speed (rpm)	470	115	90	70	33	24	20	17	7
	负载力矩 Rated torque (kg.cm)	0.2	0.7	1.0	1.2	1.8	2.6	3.0	3.0	3.0

单电机技术参数 Motor Technical Data

电机型号 Motor model	额定电压 Rated voltage VDC	无负荷 No-load		额定 Rated				堵转 Stall	
		转速 Speed r/min	电流 Current mA	转速 Speed r/min	力矩 Torque g.cm	电流 Current mA	功率 Power W	力矩 Torque g.cm	电流 Current A
		r/min	mA	r/min	g.cm	mA	W	g.cm	A
TEC2418-1262	12.0	6200	60	4943	33.6	230	1.7	160	0.87
TEC2418-2487	24.0	8700	52	6817	37.4	180	2.62	170	0.65

