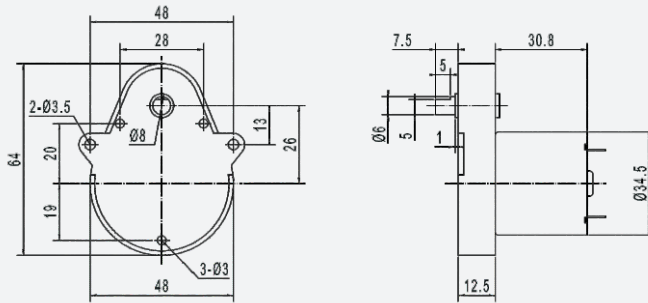
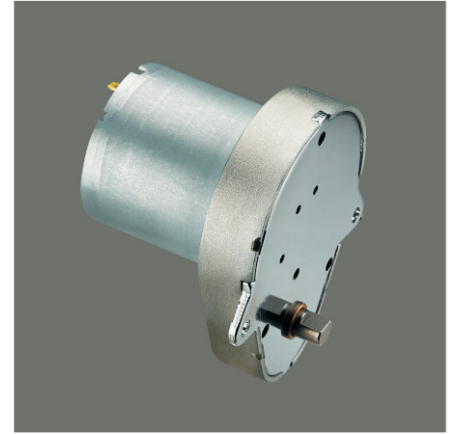


GM48-3530

48mm gearbox plus 3530 permanent magnet DC motor

模数 Module	0.3/0.4	
额定负载 Rated torque (kg.cm)	5.0 kg.cm max	
瞬间允许力矩 Max momentary tolerance torque (kg.cm)	10.0 kg.cm max	
减速比 Reduction ratio	1/89、1/128、1/225 1/250、1/283	1/360、1/400、1/453
齿轮箱减速级数 Number of gear stages	4	5
减速箱长度 Gearbox length L (mm)	12.5	



Weight: 190g(Approx)

Unit(mm)

减速电机技术参数 Gear Motor Technical Data

电压 Voltage	减速比 Reduction ratio	空载转速 No-load speed (rpm)									额定负载 Rated torque (kg.cm)
		89	128	225	250	283	360	400	453		
12.0V	空载转速 No-load speed (rpm)	55	38	22	20	18	14	13	11		
	负载转速 Rated speed (rpm)	45	33	19	17	15	12	11	10		
	负载力矩 Rated torque (kg.cm)	2.1	3.1	5.0	5.0	5.0	5.0	5.0	5.0	5.0	
	空载转速 No-load speed (rpm)	60	43	24	22	20	16	14	12		
24.0V	负载转速 Rated speed (rpm)	55	38	22	20	17	14	12	11		
	负载力矩 Rated torque (kg.cm)	2.1	3.1	5.0	5.0	5.0	5.0	5.0	5.0		
	空载转速 No-load speed (rpm)	60	43	24	22	20	16	14	12		

单电机技术参数 Motor Technical Data

电机型号 Motor model	额定电压 Rated voltage	无负荷 No-load		额定 Rated			堵转 Stall		
		转速 Speed	电流 Current	转速 Speed	力矩 Torque	电流 Current	功率 Power	力矩 Torque	电流 Current
		VDC	r/min	mA	r/min	g.cm	mA	W	g.cm
TRK-3530-1250	12.0	5000	45	4300	40	320	1.8	250	2.0
TRK-3530-2456	24.0	5600	20	4850	40	180	2.0	300	1.2

